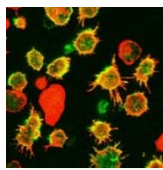




Max Planck Institute
of Biochemistry
Imaging Facility
- from vision to insight -



Imaging Club

Daniel Smeets, PhD, Leica Microsystems:

**Functional Imaging at Confocal Speed
with Fast FLIM and Phasor
on the Leica SP8 FALCON**

Wednesday 5 February 11.00, Small Lecture Hall ("T" Building)

The Leica SP8 FALCON is the world's first truly integrated fluorescence lifetime imaging (FLIM) solution, over 10x faster than classical FLIM, enabling FLIM at confocal speed. This allows live measurements of key parameters such as FLIM-FRET, biosensing (e.g. metabolic state, micro-environment, membrane dynamics), as well as better contrast by fluorophore separation through fluorescence lifetime.

FALCON FLIM is completely integrated into the SP8 platform, making it easy to use for any confocal user. On top of that, FLIM Phasor analysis makes interpretation of the data fast, robust and intuitive.

Daniel Smeets will give an overview of the technology and give ideas how to use FLIM for your own biological questions.

<https://www.biochem.mpg.de/facilities/imaging>

